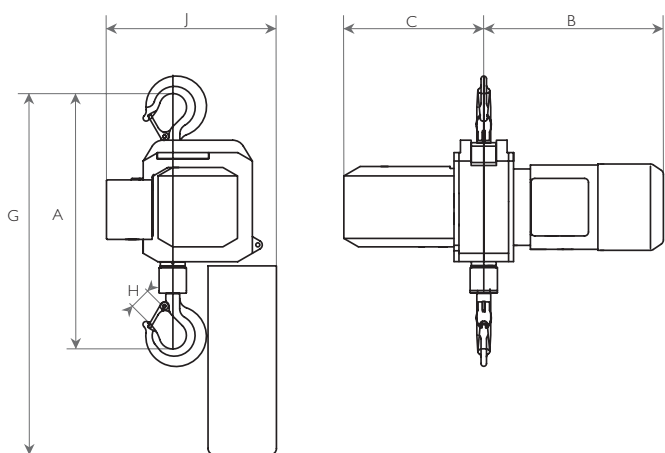


S3 HIGH CAPACITY SPECIFICATIONS

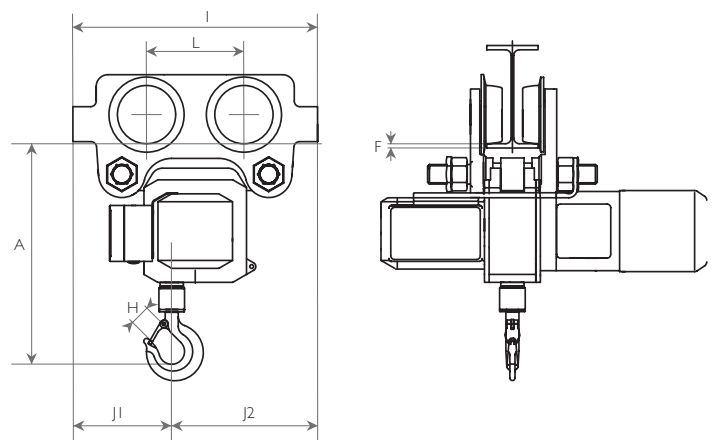
Technical Data: 400v 3ph 50hz

Capacity kg	Model	Rating FEM (ISO)	Falls	Hoist Speeds		Power kW	Hoist Motor Current			Weights kg (3m lift)			
				Fast m/min	Slow m/min		Starting (A)	Running (A)	ED% Rating	Hook Suspension	Push Trolley	Geared Trolley	Electric Trolley
2000	3200	1Bm(M3)	1	8	-	2.8	30	6.4	25	88	150	154	164
2000	3200	1Bm(M3)	1	8	2	2.8/0.7	30/7.2	6.8/4.0	25/15	93	155	159	169
2500	3250	1Am(M4)	1	5	-	2.3	25	5.3	40	88	150	154	164
2500	3250	1Am(M4)	1	5	1.25	2.3/0.58	24/5.9	5.5/3.3	40/20	93	155	159	169
3000	3300	1Bm(M3)	1	5	-	2.8	30	6.4	25	88	150	154	164
3000	3300	1Bm(M3)	1	5	1.25	2.8/0.7	30/7.2	6.8/4.0	25/15	93	155	159	169
3200	3320	1Am(M4)	2	4	-	2.3	25	5.3	40	107	169	173	183
3200	3320	1Am(M4)	2	4	1	2.3/0.58	30/7.2	6.8/4.0	40/20	112	174	178	188
4000	3400	1Bm(M3)	2	4	-	2.8	30	6.4	25	107	169	173	183
4000	3400	1Bm(M3)	2	4	1	2.8/0.7	30/7.2	6.8/4.0	25/15	112	174	178	188
5000	3500	1Am(M4)	2	2.5	-	2.3	25	5.3	40	107	169	173	183
5000	3500	1Am(M4)	2	2.5	0.6	2.3/0.58	24/5.9	5.5/3.3	40/20	112	174	178	188

Top Hook Suspension



Push Travel



Dimensions (mm)

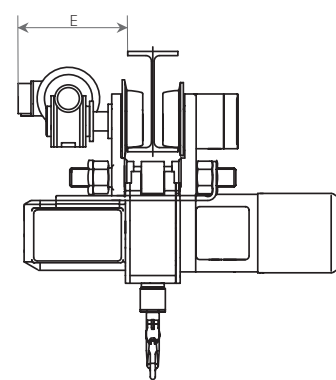
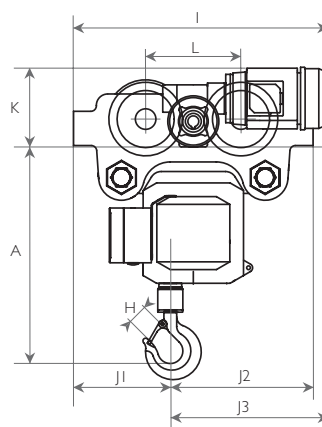
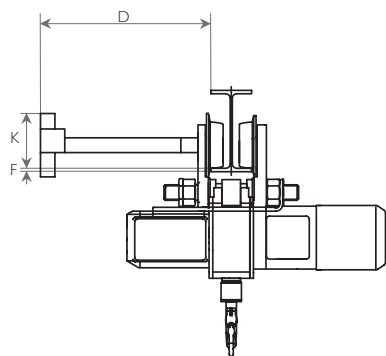
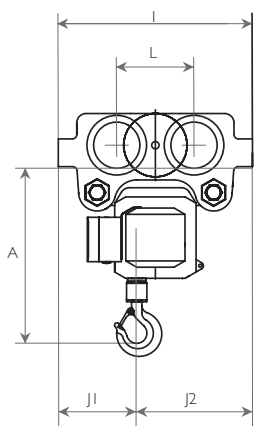
Capacity kg	Falls	Model	A		B		C	D	E	F	G		H		I		J	J1	J2	J3	K			L
			Hook	Travel	Hoist						Grd.	SS	Flange	STD Chain Bag		Hook Throat					Trolley Width		Beam to Highest	
			Unit	Unit	SS	DS	Hook Only	DS	Top	Built in				Top	Load	Push & Geared	SS DS	Overall Width	Point Push	Grd	ETT	Wheel Centres		
2000	1	3200	516	465	362	417	272	264	240	27	660	609	37	37	525	559	341	213	312	346	143	150	178	209
2500	1	3250	516	465	362	417	272	264	240	27	660	609	37	37	525	559	341	213	312	346	143	150	178	209
3000	1	3300	516	465	362	417	272	264	240	27	660	609	37	37	525	559	341	213	312	346	143	150	178	209
3200	2	3320	681	615	362	417	272	264	240	27	683	617	46	46	525	559	341	253	272	306	143	150	178	209
4000	2	3400	681	615	362	417	272	264	240	27	683	617	46	46	525	559	341	253	272	306	143	150	178	209
5000	2	3500	681	615	362	417	272	264	240	27	683	617	46	46	525	559	341	253	272	306	143	150	178	209

Trolley Data

Capacity kg	Model	Range	Beam Width min/max	Min Radius m	Speeds		Power kW		Motor Current			
					Fast m/min	Slow m/min	SS	DS	SS Motor		DS Motor	
									Starting (A)	Running (A)	Starting (A)	Running (A)
2000-5000	All	A	98-180	1.8	11	2.8	0.37	0.3/0.09	8.4	1.2	6.1/4.6	0.87/0.66
2000-5000	All	B	180-300	1.8	11	2.8	0.37	0.3/0.09	8.4	1.2	6.1/4.6	0.87/0.66

Hand Geared Travel

Electric Travel



Specifications subject to change without notice.