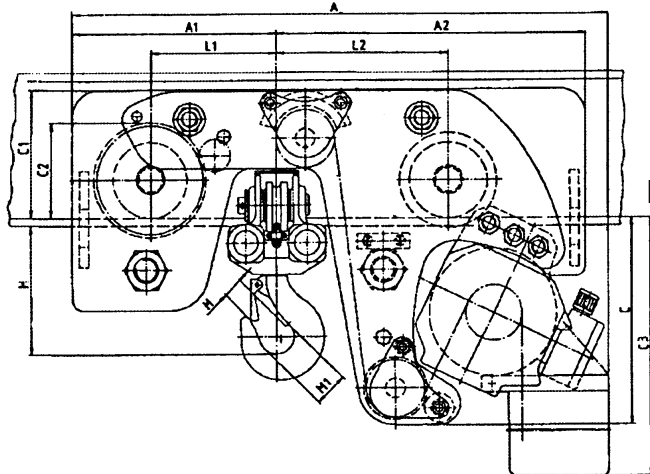
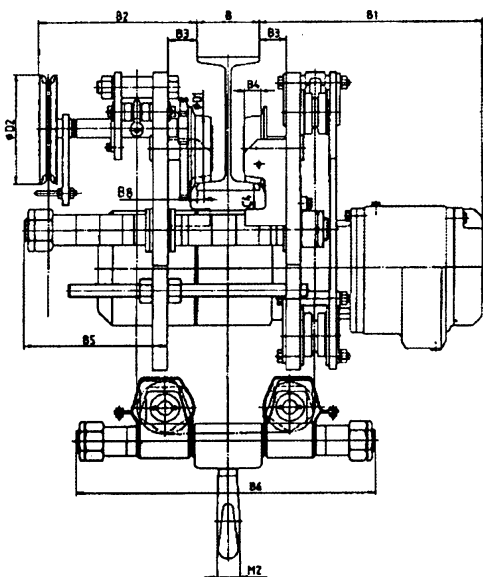


## S3 Ultra Low Headroom Hoists with Integral Trolley (Capacities 1000 to 50000 kg)

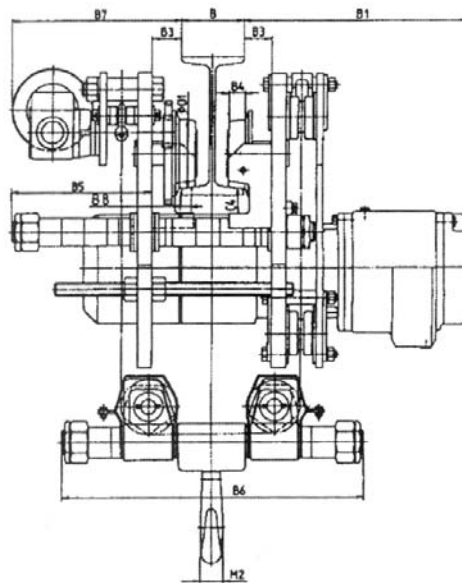


Electric travel trolley D/S

capacity kg	speed	output	duty cycle %
	m/min	kW	
1000	16 (16 / 4)	0.18 (0.25 / 0.06)	40
2000			
2500			
3200			
4000	16 (16 / 4)	0.5 / 0.12	
5000			
6300			
8000		0.55 / 0.14	
10000			
12000			



Geared travel trolley



capacity	main dimensions in mm																											
	A (1)	A1	A2	B1	B2	B3	B4	B5			B6			B7	B8	C	C1 (2)	C2	C3 (1)	C4	D1	D2	H	L1	L2	M	M1	M2
								with load bar size																				
1	2	3	1	2	3	1	2	3																				
1000	600	225	325	308	272	40	20	130	176	188	456	456	548	285	7	214	127	82	350	28	65	135	155	160	190	23	36	22
2000	695	265	405	349	286	43	23	136	185	223	486	486	582	294	10	293	167	107	450	28	85	135	185	170	235	32	43	29
2500	890	325	480	390	285	48	28	243	211	-	516	603	-	327	13	326	199	150	520	43	120	195	213	200	265	38	50	38
3200	890	325	480	390	283	48	28	243	211	-	516	603	-	327	13	326	199	150	520	43	120	195	213	200	265	38	50	38
4000	985	410	520	396	286	47	33	188	189	-	472	568	-	340	15	323	204	185	520	43	150	195	254	270	310	45	63	53
5000	985	410	520	396	286	47	33	188	189	-	472	568	-	340	15	233	204	185	520	43	150	195	254	270	310	45	63	53
6300	985	410	520	396	286	47	33	188	189	-	472	568	-	340	15	323	204	185	520	43	150	195	254	276	310	45	63	53

## S3 Ultra Low Headroom hoists with Integral Trolley

Zinc plated high quality RUD load chain according to EN 818-7-T with improved tolerances to achieve smooth running and to reduce wear.

Overload protection by slipping-clutch up to 6300 kg.

Overload protection by current cut-off from 8000 kg upwards.

Electric trolleys with end stops and two travel speeds of 16/4 m/min.

### Also Available:

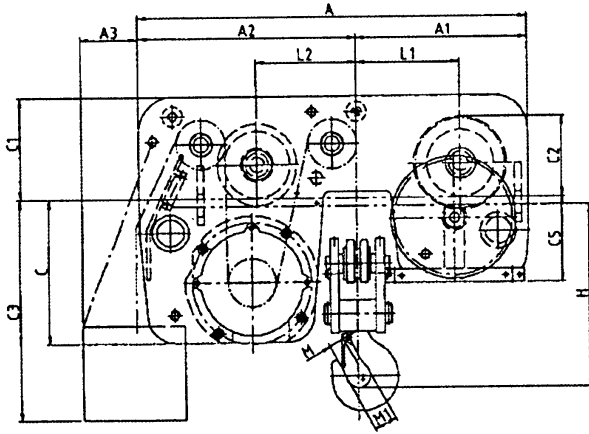
- Beam locking clamp (please indicate beam size).
- Rack and pinion drive.
- Modification for curved beam.
- Zinc plated trolley.
- Operating limit switch, lifting.
- Radio control
- Frequency control.
- End stops for hand geared trolley.

capacity kg	chain falls no.	chain mm	flange width from - to for load bar size			at 30 m hand chain path (1) m	hand chain pull for travel (1) approx. daN	FEM group 9.511	lifting motor			weight	
			1 N mm	2 N mm	3 N mm				speed m / min	output kW	(ED) duty cycle %	at 3m track approx. kg	per m add. lift approx. kg
1000	2	5 x 15	74 - 150	151 - 220	221 - 310	7.8	9	1 Bm	4.5 / 1.1	0.88 / 0.22	30 / 20	118 / 128	2.3
2000	2	7 x 21	82 - 156	157 - 210	211 - 306	9.8	13	1 Am	4 / 1	1.5 / 0.37	30 / 20	205 / 195	3.5
2500	2	9 x 27	106 - 223	224 - 310	-	6.3	8	1 Am	5.5 / 1.3	2.6 / 0.65	40 / 25	245 / 255	4.9
3200	2				-	6.3	10	1 Bm	4.0 / 1.1	2.1 / 0.55	40 / 40		4.9
4000	4		119 - 215	224 - 310	-	6.5	10	2 m	2.8 / 0.7	2.6 / 0.65	40 / 25	380 / 395	8.5
5000	4				-		12	1 Am	2.8 / 0.7	2.6 / 0.65	40 / 25		8.5
6300	4				-		15	1 Bm	2 / 0.5	2.1 / 0.55	40 / 40		8.5
8000	2		16 x 45	155 - 310 <sup>(1)</sup>	-	-	4	28	2 m	2.8 / 0.7	4 / 1	60 / 60	1060
10000	2	-			-	28		1 Am	2.8 / 0.7	5.5 / 1.4	40 / 40	1065	13.7
12000	2	-		-	28	1 Bm	2.8 / 0.7	6 / 1.5	30 / 30	1650	13.7		
16000	4	185 - 310 <sup>(1)</sup>		-	-	28	1 Am	1.4 / 0.3	5.5 / 1.4			40 / 40	
20000	4			-	-	28	1 Bm	1.4 / 0.3	30 / 30				
25000	6			-	-	2 x 14	1 Bm	1 / 0.2	5.5 / 1.4	40 / 40	2150	39.3	
30000	6	-		-	2 x 14	1 Cm	1 / 0.2	30 / 30	40 / 40	2500	45.6		
40000	2 x 4	300 - 400 <sup>(1)</sup>		-	-	3.7	2 x 17	1 Bm	1.4 / 0.3	2 x 5.5 / 1.4	40 / 40	3000	57
50000	2 x 5	300 - 400 <sup>(1)</sup>	-	-	-	-	1 Bm	1.1 / 0.27	2 x 5.5 / 1.4	40 / 40			

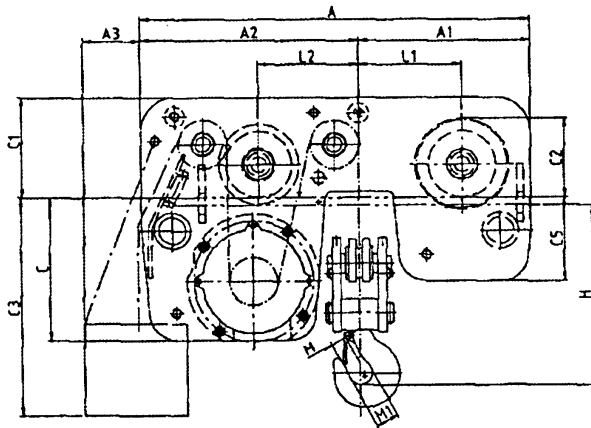
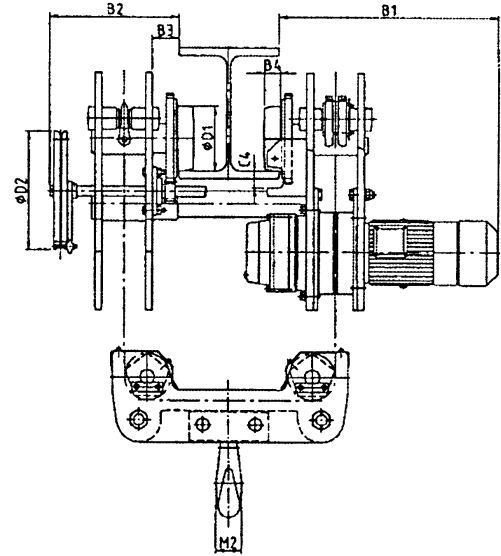
(1) Please specify desired flange width

# S3 Ultra Low Headroom Hoists with Integral Trolley

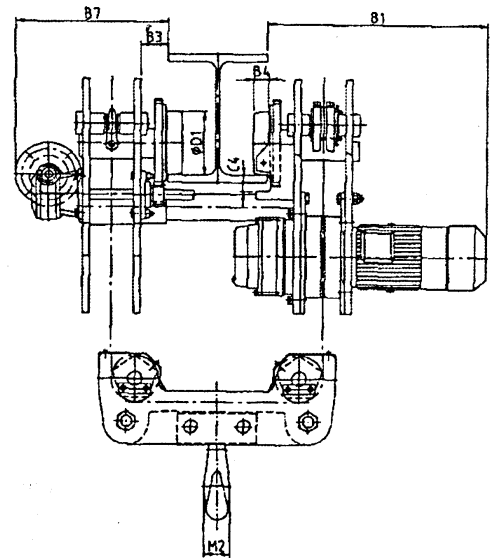
**MORRIS**  
MATERIAL HANDLING®



8000 - 50000 kg



8000 - 50000 kg



capacity kg	main dimensions in mm																						
	A	A1	A2	A3	B1	B2	B3	B4	B7	C	C1	C2	C3	C4	C5	D1	D2	H	L1	L2	M	M1	M2
8000	1150	500	650	350	665	400	84	45	443	425	300	236	530	51	250	198	365	305	300	300	45	63	45
10000	1150	500	650	350	665	400	84	45	443	425	300	236	530	51	250	198	365	360	300	300	45	71	53
12000	1150	500	650	350	665	400	84	45	443	425	300	236	530	51	250	198	365	360	300	300	45	71	53
16000	1465	665	800	350	665	400	85	62	471	365	410	341	530	44	305	298	440	407	400	400	55	90	80
20000	1465	665	800	350	665	400	85	62	471	365	410	341	530	44	305	298	440	487	400	400	69	100	90
25000	2200	1070	1130	95 <sup>(2)</sup> 245 <sup>(3)</sup>	709	454	128	57	567	371	469	292	626 <sup>(2)</sup> 826 <sup>(3)</sup>	75	261	248	365	560	630	690	71	100	90
30000	2200	1070	1130	95 <sup>(2)</sup> 245 <sup>(3)</sup>	709	454	128	57	567	371	469	292	626 <sup>(2)</sup> 826 <sup>(3)</sup>	75	261	248	365	560	630	690	80	112	100
40000	2346	1173	1173	161	704	-	118	60	639	387	469	341	411	81	387	298	-	630	683	683	85	125	112
50000	2522	1261	1261	311	720	-	118	60	720	411	529	341	641	100	411	298	-	670	771.5	771.5	85	125	112

EXPERIENCE THE DIFFERENCE